

RETAIL SPACE IN CLINTON HILL • 300 SQUARE FEET PLUS OVERSIZED BASEMENT STORAGE



598 MYRTLE AVENUE

LOCATED BETWEEN TAAFFE PLACE AND CLASSON AVENUE

- 300 square feet space (approx), plus oversized basement storage.
- Expansive glass facade, bringing abundant natural light and visibility.
- The space includes a ground -floor bathroom.
- Around the corner from Pratt Institute.
- Close to the Brooklyn-Queens Expressway.
- Easy to access by the G train at Classon Avenue, this space is also close to multiple bus lines.

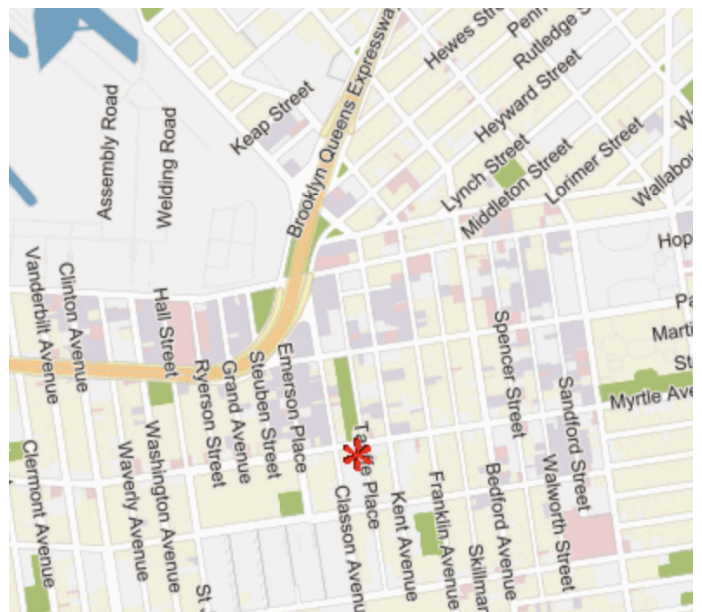
LICENSED BROKER & PRINCIPAL

DANIEL BARCELOWSKY

PHONE : 646.373.7944

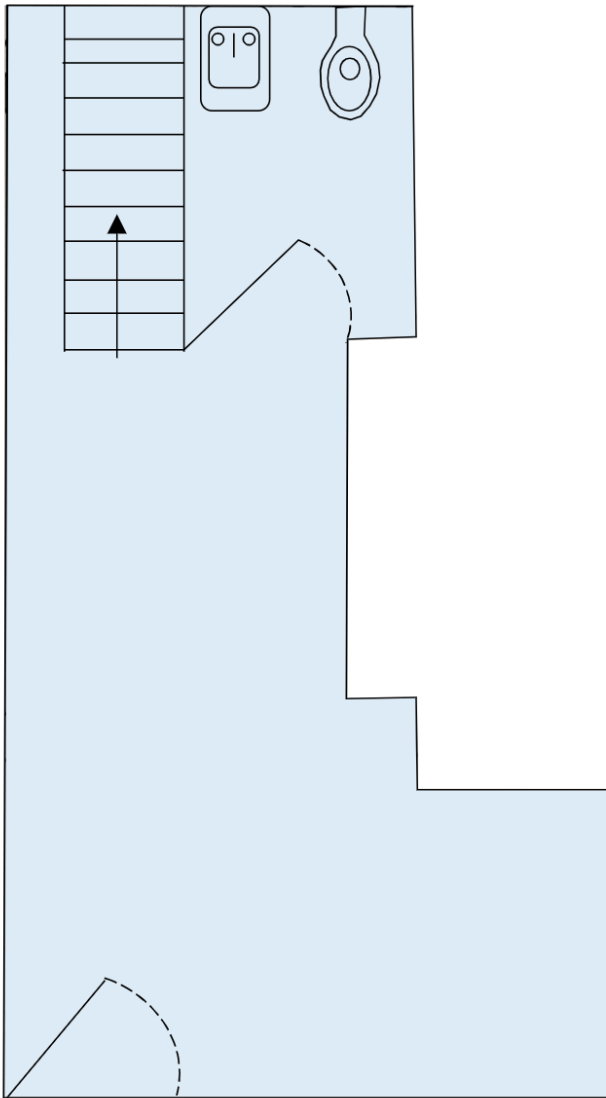
E-MAIL : DANIEL@EVRGREALTY.COM

\$2,695/MONTH

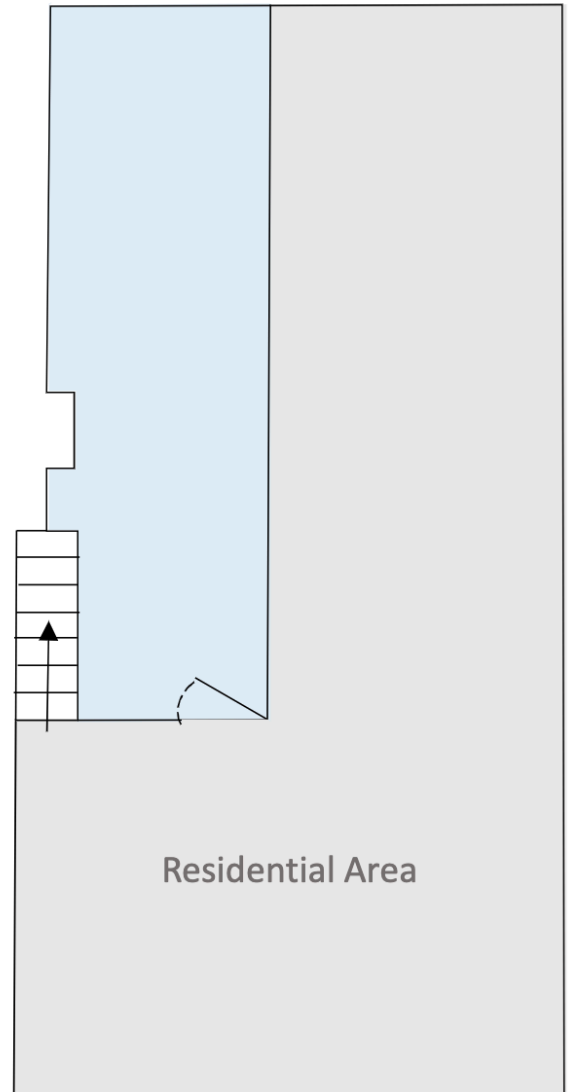


FLOORPLAN:

Ground Floor



Lower Level



Myrtle Ave
13' Frontage

