

APPROX 4,153 SQUARE FEET RETAIL/OFFICE SPACE • ALL USES CONSIDERED IN PRIME WILLIAMSBURG



## 467 KEAP STREET

BETWEEN METROPOLITAN AVENUE AND AINSIE STREET

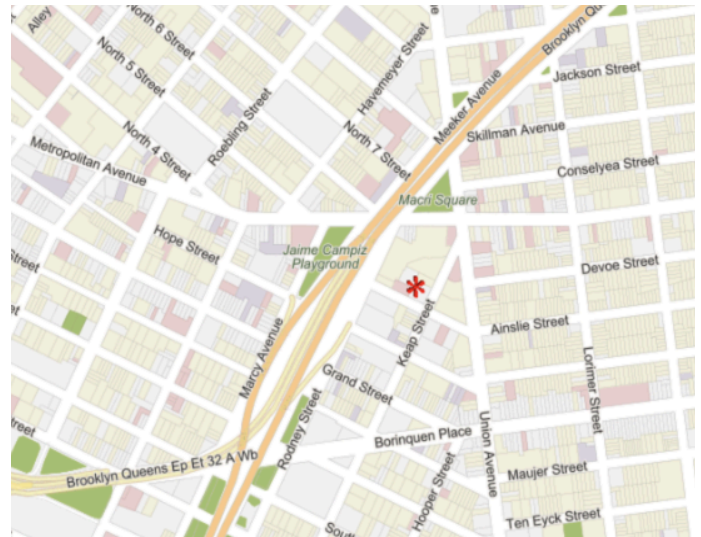
- Approx. 4,153 SF in a 2009 mixed-use development
- 13 FT ceiling height
- Ideal for fitness, wellness, or medical use — luxury gym tenant taking occupancy upstairs July 1st, 2025
- Surrounded by galleries, restaurants, and schools — consistent local foot traffic
- Excellent transit access: near the G, J, L, M, and Z lines
- All general uses considered: office, retail, therapy, or clinic

### EXCLUSIVE BROKERS:

DANIEL BARCELOWSKY  
EVRG REALTY & INVESTMENTS  
PHONE : 646.373.7944  
E-MAIL : [DANIEL@EVRGREALTY.COM](mailto:DANIEL@EVRGREALTY.COM)

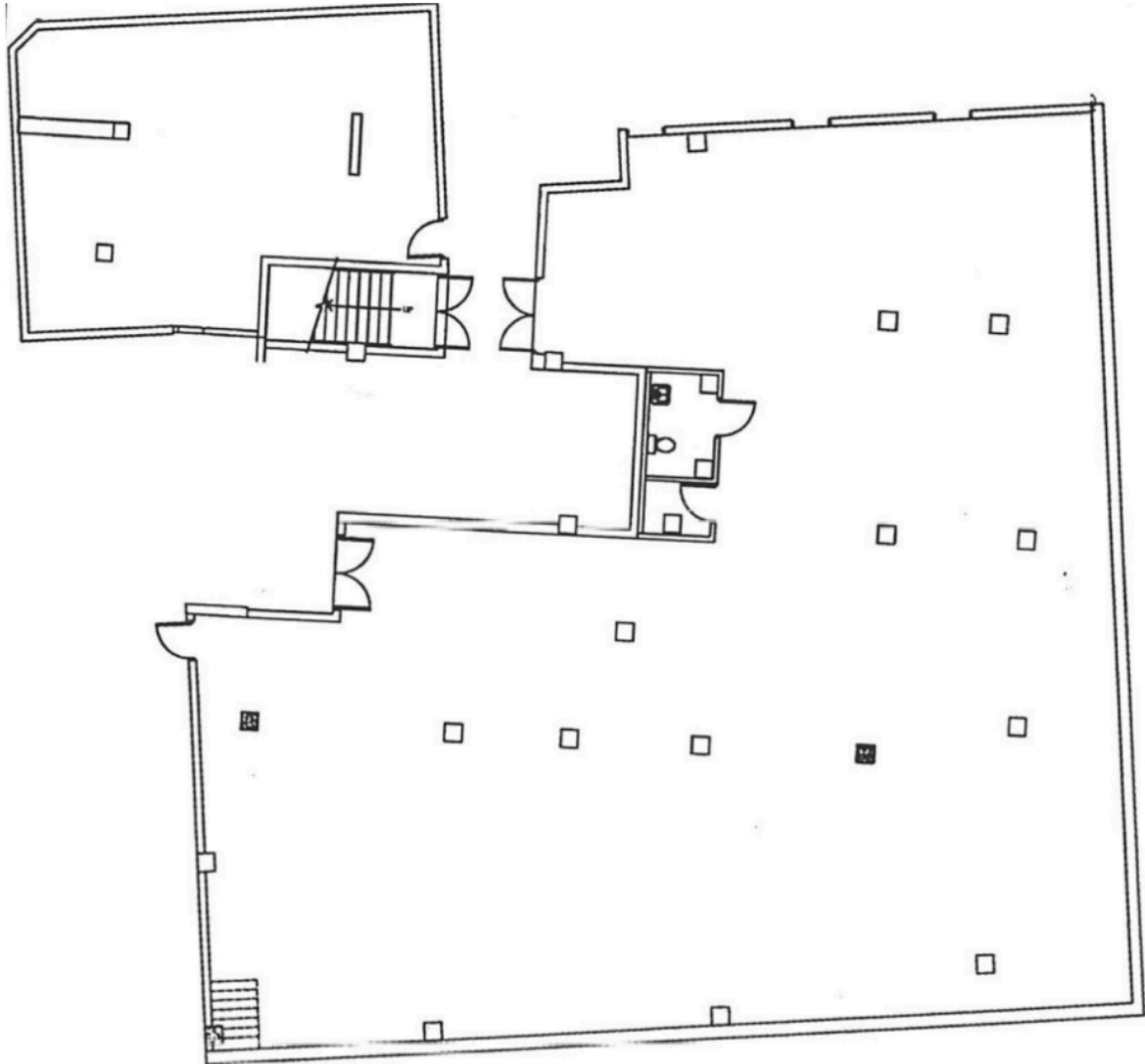
TZIPPORAH WEXLER  
GRAND SUCCESS REALTY  
PHONE: 212.353.9375  
EMAIL: [MODAHANI811@AOL.COM](mailto:MODAHANI811@AOL.COM)

**\$8,000/MONTH**



---

FLOORPLAN:



LOWER LEVEL

