

RETAIL SPACE IN CROWN HEIGHTS • 425 SF (APPROX) • GUARANTEED FOOT TRAFFIC



868 NOSTRAND AVENUE

LOCATED BETWEEN UNION STREET AND PRESIDENT STREET

- Approx. 425 SF in prime Crown Heights with guaranteed foot traffic
- Ten feet of frontage on bustling Nostrand Avenue
- Rate includes utilities, building services, and property expenses
- Conference rooms available
- Private restrooms
- Steps from the 2 and 5 trains at President Street, with the 3 and 4 lines a minute away at Nostrand Avenue
- Short walk to Brooklyn Botanic Garden and Prospect Park
- Ideal for office use, coworking space, or retail
- Surrounded by thriving businesses and neighborhood conveniences
- All dry uses considered

LICENSED SALESPERSON

AMY ERICSON

PHONE : 646.655.9413

E- MAIL : AMY@EVRGREALTY.COM

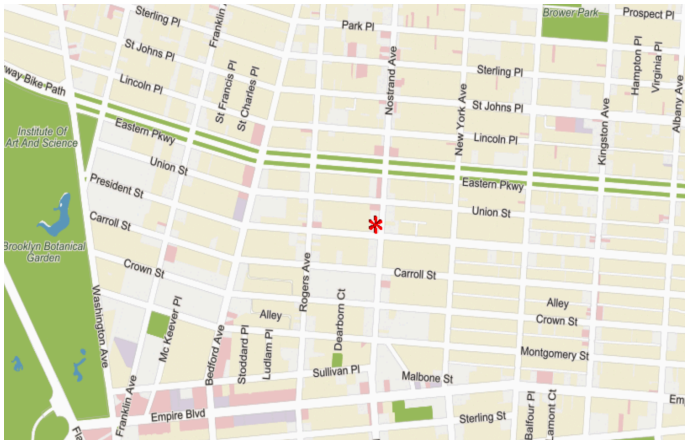
LICENSED SALESPERSON

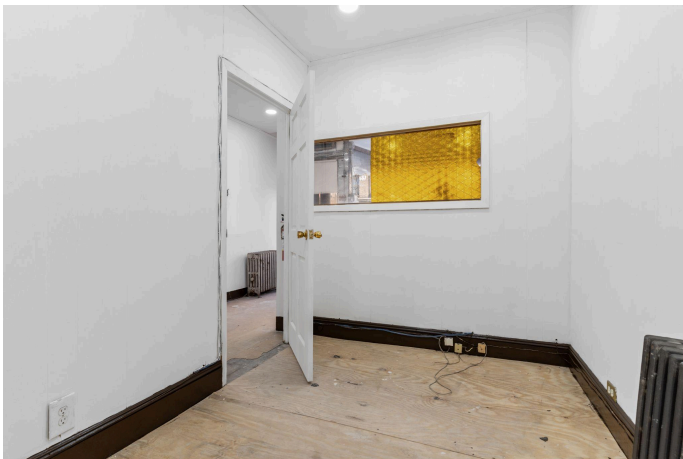
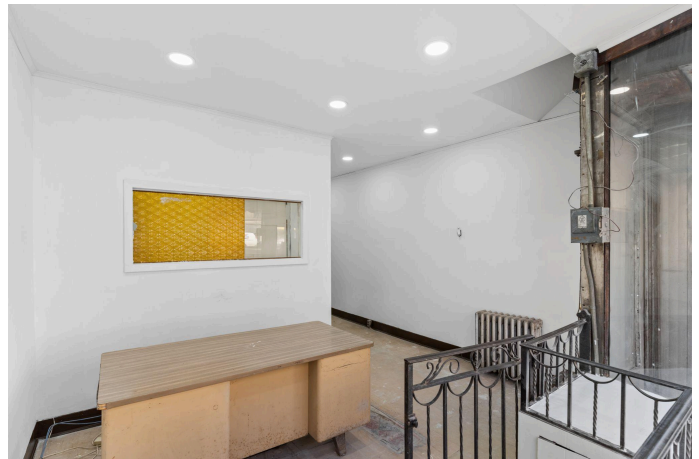
GREG INFANTI

PHONE : 917.676.4700

E- MAIL : GREG@EVRGREALTY.COM

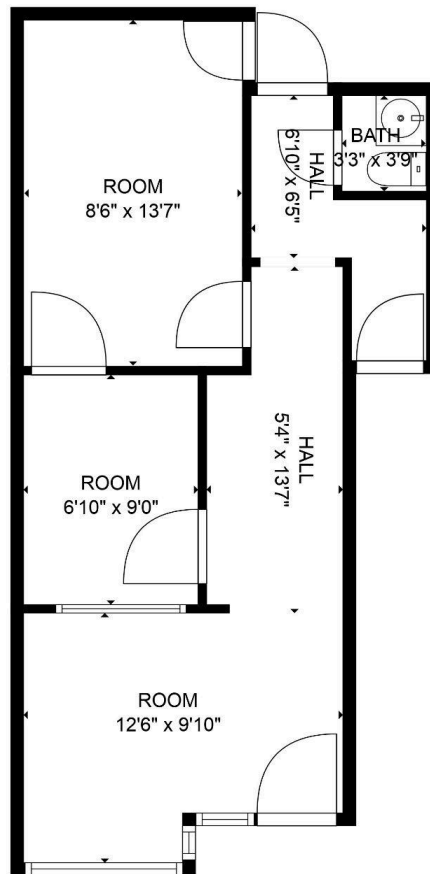
\$2,000/MONTH







FLOORPLAN:



TOTAL: 131 sq. ft
FLOOR 1: 131 sq. ft
EXCLUDED AREAS: ROOM: 294 sq. ft

FLOOR PLAN CREATED BY CUBICASA APP. MEASUREMENTS DEEMED HIGHLY RELIABLE BUT NOT GUARANTEED.