

3,178 SF TRIBECA CONDOMINIUM • HIGH CEILINGS & LOFT WINDOWS



65 N MOORE STREET

Between Hudson & Greenwich

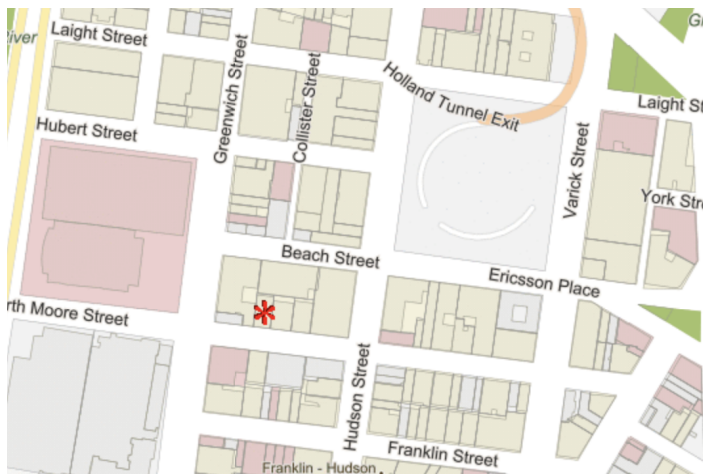
This fully sprinklered 3,178 SF prime Tribeca condominium has six loft windows, 12' ceilings, wide column spacing and direct keyed elevator access.

- 3,178 square feet
 - Interior SF: 2,886
 - Exclusive Outdoor SF: 225
 - Commercial Foyer SF: 67
- 12' ceilings, wide column spacing
- Six loft windows, fully sprinklered
- Current CO for Storage
- Direct keyed elevator access
- Exposed brick walls and wood beams
- Existing bathroom plumbing
- Landmarked building
- Private outdoor space
- Potential for private street entrance
- Monthly tax of \$1,249 is under protest
- Monthly maintenance of \$269
- Zoned C6-2A

LICENSED BROKER & PRINCIPAL

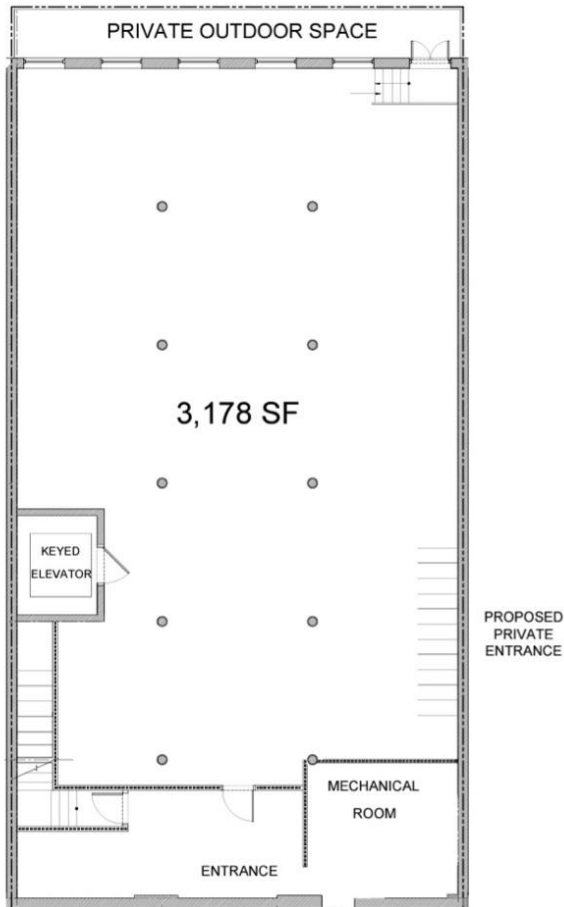
Daniel Barcelowsky

646.373.7944 daniel@evrgrealty.com



Potential use as an office, showroom, gallery, or general commercial can be achieved with an alteration type 1. Proposed plans available upon request.

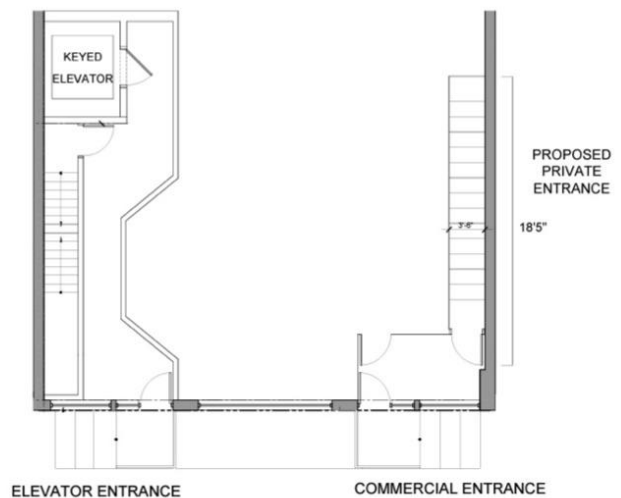
\$1,195,000



LOWER LEVEL

65 N Moore Street

- 3,178 square feet
 - Interior SF: 2,886
 - Exclusive Outdoor SF: 225
 - Commercial Foyer SF: 67
- 12' ceilings, wide column spacing
- Six loft windows, fully sprinklered
- Current CO for Storage
- Direct keyed elevator access
- Private outdoor space
- Exposed brick walls and wood beams
- Existing bathroom plumbing
- Landmarked building
- Private outdoor space
- Potential for private street entrance
- Landmarked building
- Monthly tax of \$1,249 is under protest
- Monthly maintenance \$269
- Zoned C6-2A



GROUND FLOOR



