



1715 BLEECKER STREET, APT 2R

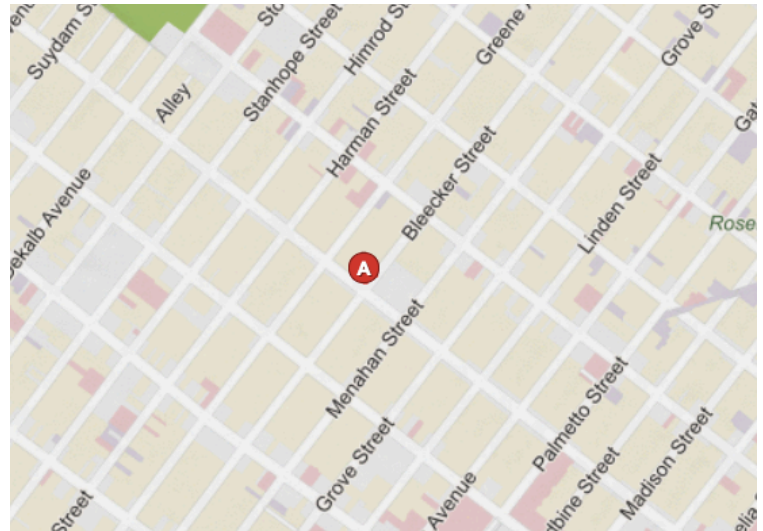
LOCATED BETWEEN CYPRESS AVENUE AND
SENECA AVENUE

- NO FEE fabulously renovated boxed two-bedroom
- Two separate entrances + bedrooms on either end of apartment for extra privacy
- Modern, windowed kitchen with stainless steel appliances
- Full windowed bathroom with elegant marble tiling
- Spacious living room + ample closet space
- Beautiful exposed brick throughout
- Brand new hardwood flooring throughout
- High ceilings + elegant recessed lighting + ceiling fans
- Located right on the Ridgewood/Bushwick border
- 5-minute walk to M train at Seneca Avenue
- 7-minute walk to M & L trains at Myrtle/Wyckoff Avenue
- Close to the B13, B26, B38, B52, Q26, Q58 buses
- Steps away from all of your essentials as well as amazing shopping, dining and nightlife on the vibrant streets of Myrtle Avenue, Wyckoff Avenue and Gates Avenue
- Pets allowed on a case-by-case basis
- Guarantors accepted
- Immediate availability
- Advertised price is net effective based on two months free on a 12-year lease

LICENSED SALESPERSON DAVID SORIA

PHONE : 917.744.6927
E- MAIL : DAVID@EVRGREALTY.COM

\$2,208 / MONTH



NO FEE • NEWLY RENOVATED BOXED 2-BED • EXPOSED BRICK

