



139 TOMPKINS AVENUE

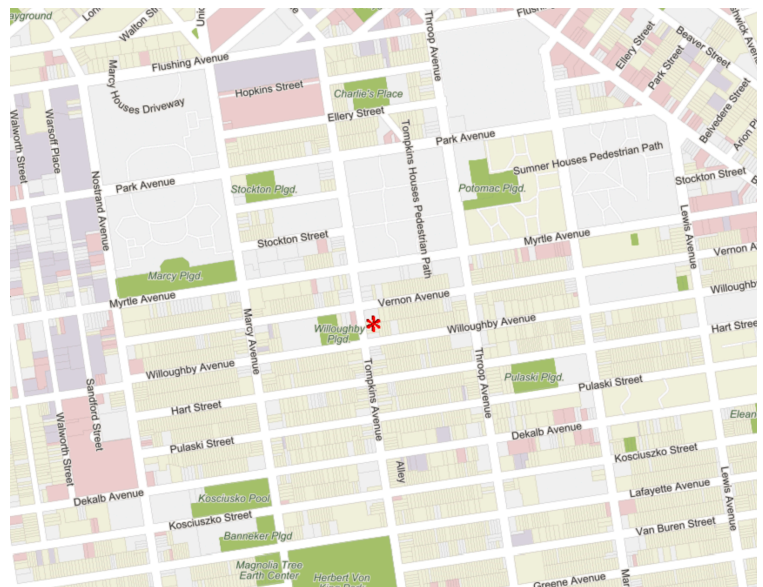
LOCATED BETWEEN VERNON AVENUE AND WILLOUGHBY AVENUE

- 700 SF Retail on busy Bed-Stuy Avenue
- Approx 18 feet of frontage with heavy foot traffic
- Located in a flourishing pocket of Brooklyn
- Designed with tiered built-in landscape for display, seating and storage
- Private restroom
- High ceilings
- Windows for bright, natural light
- Perfect for coffee shop/cafe/boutique use
- Roll gate for maximum security
- All uses considered
- Immediate possession
- No key money required
- 4-minute walk to G train at Myrtle-Willoughby Avenues
- 12-minute walk to G train at Myrtle-Willoughby Avenues
- Easy street parking

**LICENSED BROKER & PRINCIPAL
DANIEL BARCELOWSKY**

PHONE : 646.373.7944
E- MAIL : DANIEL@EVRGREALTY.COM

\$2500/MONTH



700 SF RETAIL IN PRIME FLOURISHING AREA OF BED-STUY

