



109 RALPH AVENUE - SPACE A

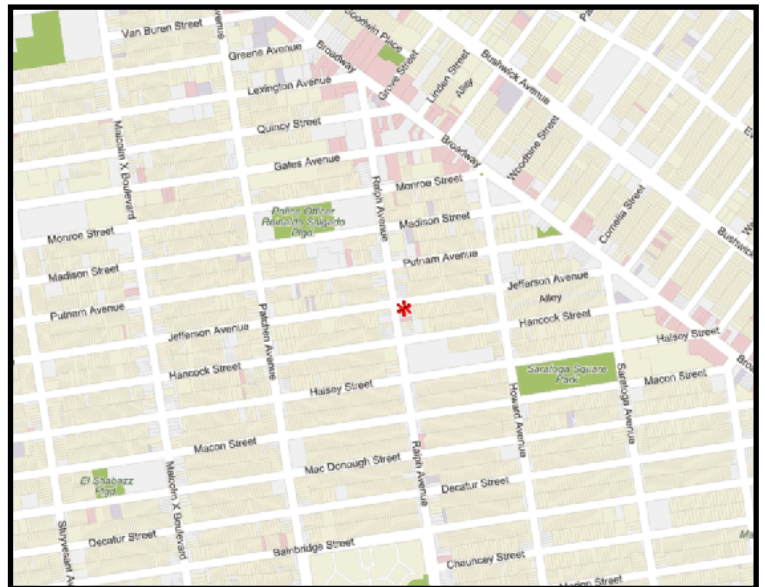
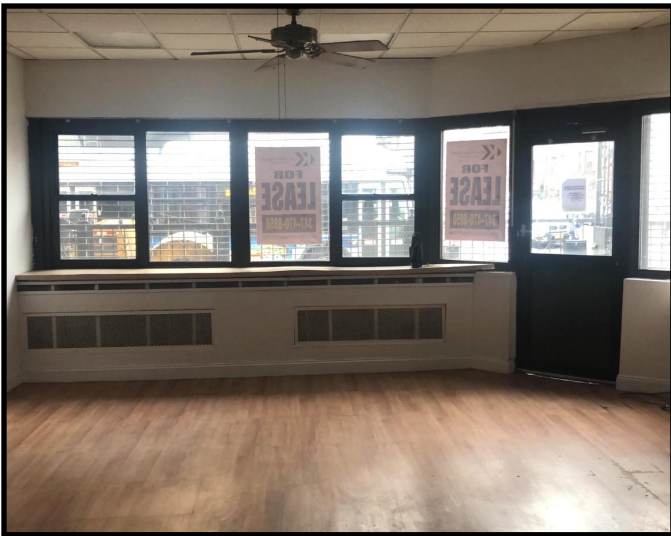
LOCATED BETWEEN JEFFERSON AVENUE AND HANCOCK STREET

- 950 SF corner retail
- Located in prime Bedford Stuyvesant
- Ideal corner space for maximum exposure
- Corner of Ralph and Jefferson Avenues
- Heavy foot traffic on busy Ralph Avenue 1.5
- Full basement included
- Significant signage opportunity
- 20 Ft of frontage
- Open layout
- High ceilings
- Private 1.5 bathrooms
- Steps to J, Z, A, and C trains
- Close to Q 24, B 26, and B47 bus lines
- All uses considered
- Perfect for medical office, art studio
- Available Immediately

LICENSED BROKER & PRINCIPAL, DANIEL BARCELOWSKY
PHONE : 646.373.7944 / E- MAIL : DANIEL@EVRGREALTY.COM

LICENSED SALESPERSON, STEVE DAVID
PHONE : 347.578.1450 / E- MAIL : STEVE@EVRGREALTY.COM

\$2,799/MONTH



950 SF CORNER RETAIL IN PRIME BEDSTUY

