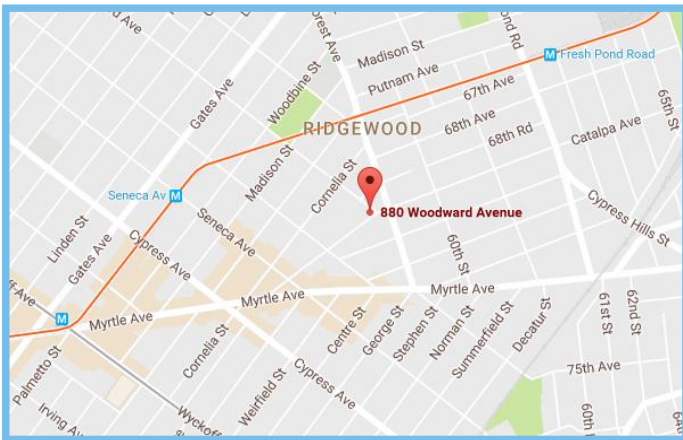


NEWLY RENOVATED RETAIL CONDO FOR SALE

880 Woodward Avenue, Ridgewood, NY 11385

ASKING PRICE: \$700,000



PROPERTY

Building Information

Block/Lot: 3473/48
Lot Dimensions: 27' x 100'
Lot SF: 1,353
Bldg Dimensions: 27' x 70'
Bldg SF: 4,589
Stories: 3
Zoning: R6B
F.A.R.: 3.39

Unit Information

Type: Retail Condo
Unit: Corner Retail
Unit SF: 800
Rooms: 6
Baths: 1
Maintenance: \$1100
Use Type: All Uses Allowed

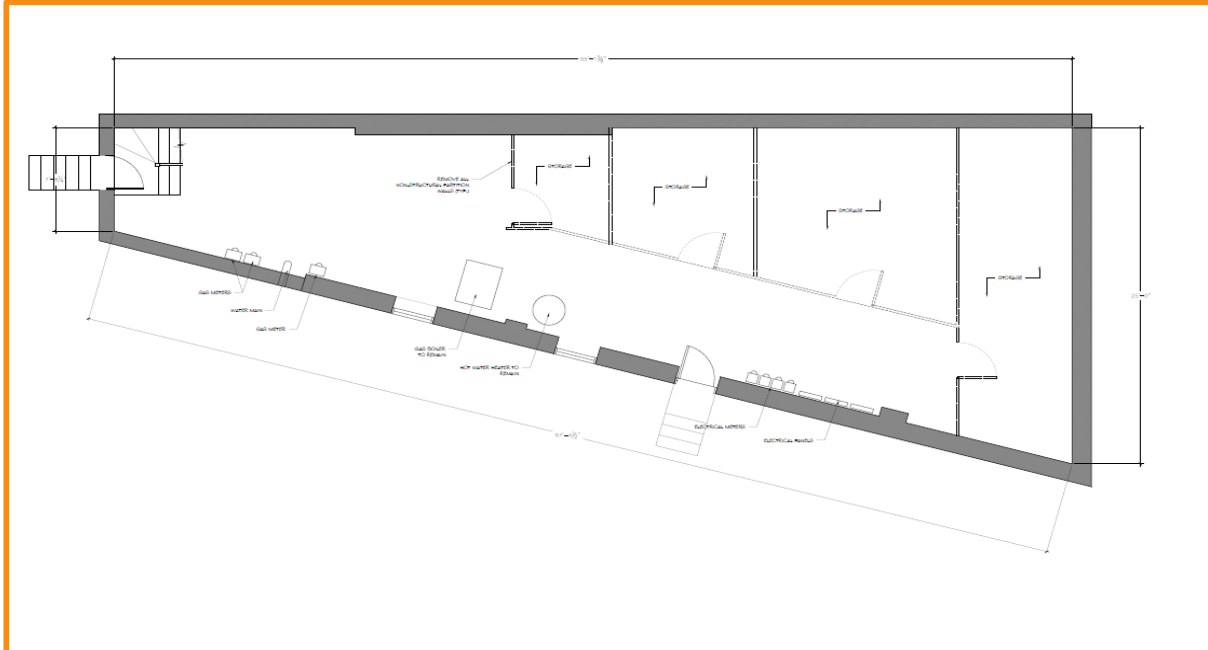
DESCRIPTION

The subject property is a newly renovated retail condo located on the corner of Woodward and Catalpa Avenues in the heart of one the most highly trafficked locations in Ridgewood. Totalling 800 sf, there is around 27ft frontage on Woodward and 15ft frontage on Catalpa Avenue giving major corner exposure. It is surrounded by numerous residential buildings, shops and restaurants. The property is just a few blocks away from the M train at Seneca Avenue and L train at the Myrtle Avenue station, serviced by multiple bus lines and is right by the Myrtle Avenue retail hub. This is a perfect retail ownership opportunity in the heart of Ridgewood.

NEWLY RENOVATED RETAIL CONDO FOR SALE

880 Woodward Avenue, Ridgewood, NY 11385

ASKING PRICE: \$700,000



DESCRIPTION

The subject property is a newly renovated retail condo located on the corner of Woodward and Catalpa Avenues in the heart of one the most highly trafficked locations in Ridgewood. Totalling 800 sf, there is around 27ft frontage on Woodward and 15ft frontage on Catalpa Avenue giving major corner exposure. It is surrounded by numerous residential buildings, shops and restaurants. The property is just a few blocks away from the M train at Seneca Avenue and L train at the Myrtle Avenue station, serviced by multiple bus lines and is right by the Myrtle Avenue retail hub. This is a perfect retail ownership opportunity in the heart of Ridgewood.