

PRIME CORNER PARK SLOPE RETAIL SPACE 1,800 SF + OVERSIZED BASEMENT WITH HVAC SYSTEM



599 4TH AVENUE

LOCATED BETWEEN 17TH STREET AND 18TH STREET

- First floor is 1,800 square feet + 1,700 square feet basement
- All uses considered: legal cannabis dispensaries, restaurants and bars
- Floor to Ceiling Windows
- Hardwood Floors
- Exposed Brick
- Space is in Excellent Condition
- Two private Restrooms
- Wi-Fi Connectivity
- Recessed Lighting
- Wheelchair Accessibility
- Fully Built-Out as a Convenience Store
- Central Air and Heating / HVAC system in place
- Walk-In Box - Freezer in the Basement
- Full Size Basement With High Ceilings
- High Foot Traffic
- Excellent access: Near the D, M, N, R and F lines

LICENSED BROKER & PRINCIPAL

DANIEL BARCELOWSKY

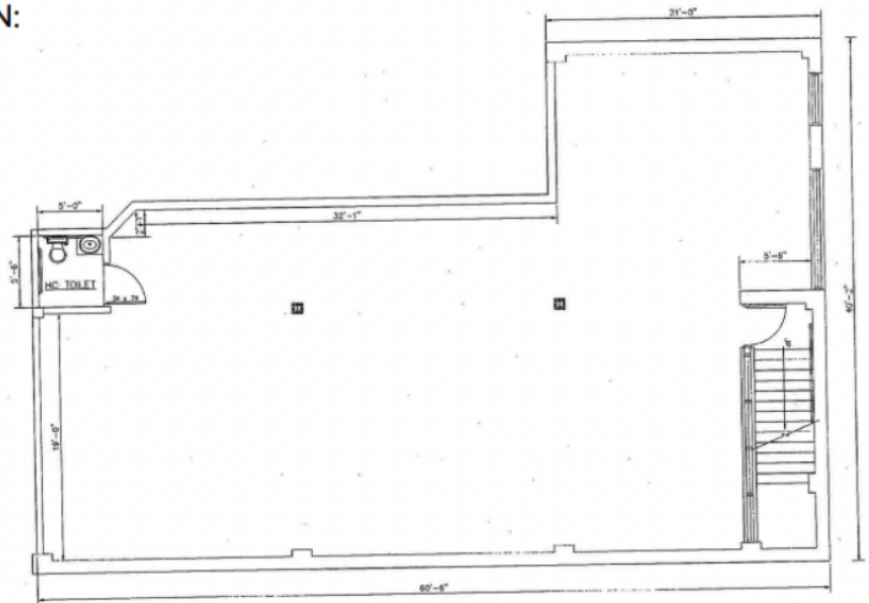
PHONE : 646.373.7944

E- MAIL : DANIEL@EVRGREALTY.COM

\$8,800/MONTH

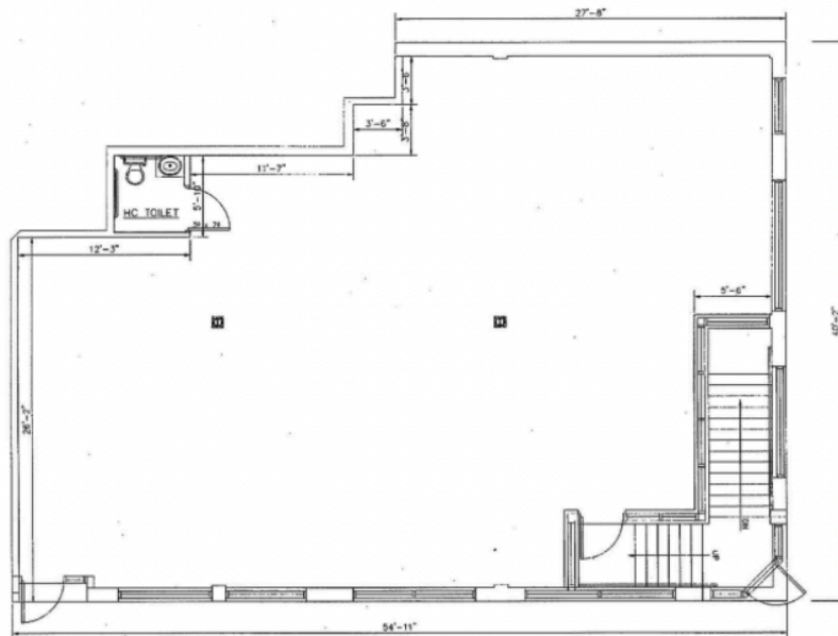


FLOORPLAN:



CELLAR FLOOR

CELLAR COMMERCIAL



1ST FLOOR

FIRST FLOOR COMMERCIAL

